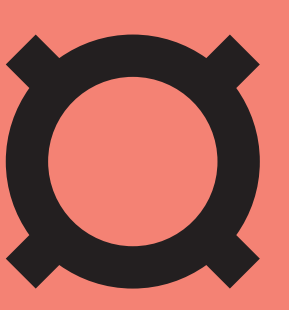


FROM BELGIUM WITH LOVE



WEAVER & DUCRÉ
LIGHTING



CORK

SUSPENDED
2200K / 2700K
LED 3W
white / black



*“Perfect in its imperfection.
That’s how real things are.
That’s how life is.”*

BERND STEINHUBER
Designer

06

Bottle empty? No problem.
Now you can hang your
favourite bottle from the
ceiling. The LED light CORK
fits all typical bottle necks.

Designed by 3HDraft

03

S&R Cornelissen reduced all the benefits of one light to the
maximum: its atmospheric panel light makes BEBOW
equally ideal for the workplace and the home dining table.

Designed by S&R Cornelissen

BEBOW

SURFACE SUSPENDED
3000K
LED 35W
white / black



07

HEXO, DOCUS, RAY, and BOX are
available not only in round, square, soft,
and hexagonal designs, but also in gold,
black, white, bronze, aluminium, and
now in copper too!

Designed by 3H Draft

09

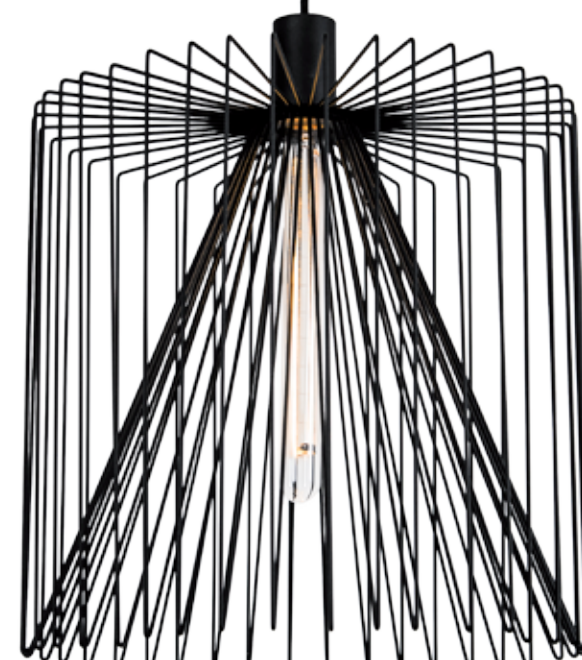
Wire at its most refined. Bernd Steinhuber
reduced the light fixture to its essentials.
Available in black or a trendy rust finish,
this light lends a unique design accent.

Designed by Bernd Steinhuber



WIRO

SUSPENDED
QA60 max. 60W
rust / black



ELLO

**SURFACE SYSTEM
SUSPENDED SYSTEM**
3000K
LED 18W / dimmable
white / black



02

Only thanks to LED technology
was it possible for S&R Cornelissen
to design such a sleek-profile light
that cuts a fine figure over office
table and dining table alike.

Designed by S&R Cornelissen



*“Ello demonstrates that it’s
perfectly possible to combine
highly functional, flexible
lighting solutions with
expressive design.”*

S&R CORNELISSEN
Award-winning international designer

COPPER COLLECTION

WALL CEILING SUSPENDED
round / square / soft / hexo
2200K / 2700K / 3000K
LED 4W / 2x4W / 8W / dimmable
white / aluminium / gold /
bronze / copper / black

BISHOP

SUSPENDED
E27 max. 25W
dark grey / white / black-gold



05

A true modern classic! Inspired
by the design of industrial factory
lighting from the 1930s, BISHOP
looks as if it is made of concrete.
But thanks to the special composite
material, it only weighs a fraction
of the material it imitates.

Designed by 3HDraft

ROCK COLLECTION

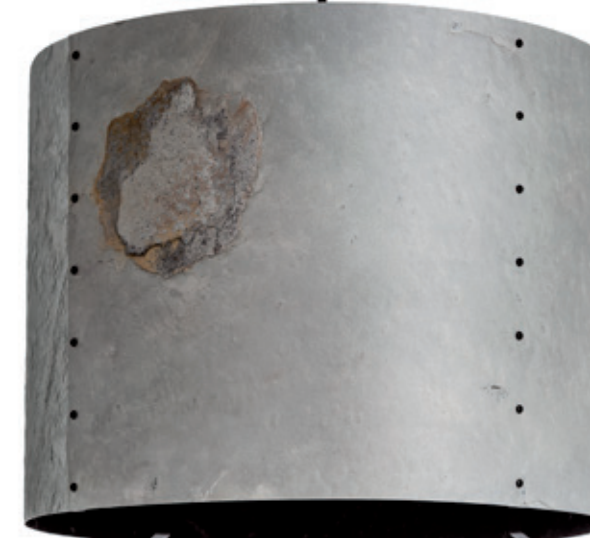
**WALL CEILING SUSPENDED
FLOOR TABLE**
E27 max. 100W
autumn white / multicolour /
silver shine / simple black



01

The ROCK COLLECTION is
a cooperation between Wever
& Ducré and the design studio
13&9, featuring luminaires
made of ultra-thin natural
shale – every piece is one
of a kind.

Designed by 13&9

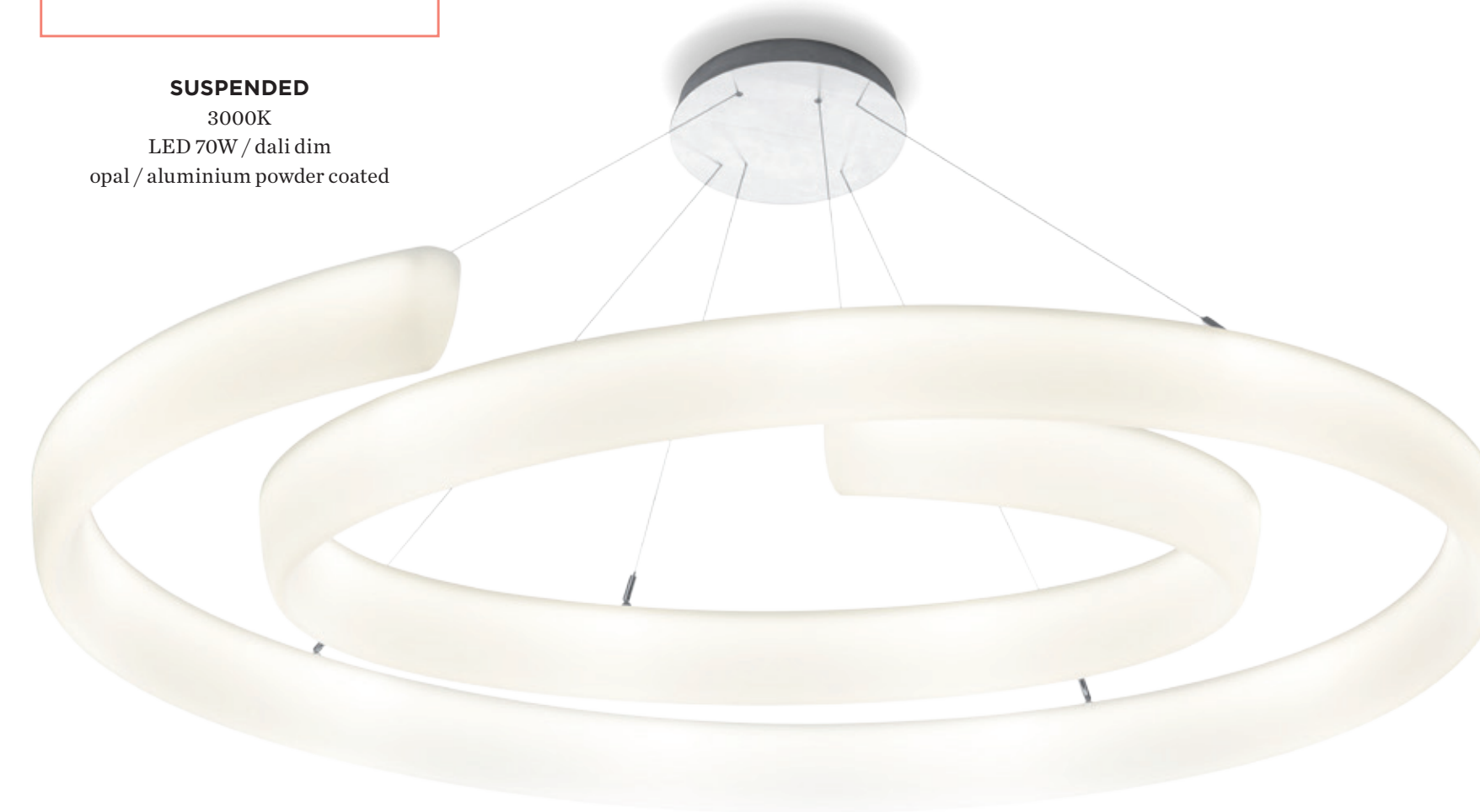


*“The Rock Collection exemplifies a
unique piece, a sensual experience,
and a new interpretation of
shading solutions.”*

MARTIN LESJAK
Contract magazine’s 2015 Designer of the Year
Co-founder and Creative Director of 13&9

CYCLONE

SUSPENDED
3000K
LED 70W / dali dim
opal / aluminium powder coated



04

CYCLONE, which is cast from a single piece,
provides optimal lighting for very large areas
such as lobbies and industrial buildings thanks
to its uniform LED illumination.

Designed by S&R Cornelissen

VENN

WALL CEILING SUSPENDED
3000K
LED 30-37W / dali dim
white / black



08

VENN represents functional design that
turns heads: three interconnected square
elements that can provide direct and indirect
lighting, combinable on the wall and ceiling
or in a suspended configuration.

Designed by S&R Cornelissen

THIS IS NOT THE END

HEAD OFFICE

WEVER & DUCRÉ BVBA
Kwadestraat 153 – Bus 2.1
8800 Roeselare
Belgium
Phone +32 51 622 650
Fax +32 51 622 695
office@weverducre.com
www.weverducre.com

REPRESENTATIVE OFFICES

WEVER & DUCRÉ ASIA PACIFIC LTD.
RM. 1413, Block A
Sea View Estate
2 Watson Road North Point
Hong Kong
Phone +852 2110 6924
Fax +852 3106 4096
office.hk@weverducre.com
office.cn@weverducre.com

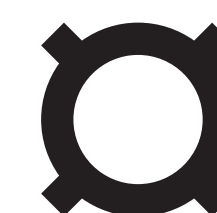
WEVER & DUCRÉ DEUTSCHLAND GMBH
Carlsbergstraße 13b
51063 Cologne
Germany
Phone +49 221 13 06 496 0
Fax +49 221 13 06 496 9
office.de@weverducre.com

WEVER & DUCRÉ SCHWEIZ GMBH
Rodteggstraße 22
6005 Luzern
Switzerland
Phone +41 79 443 74 55
Fax +41 44 245 80 99
office.ch@weverducre.com

WEVER & DUCRÉ INC.
520 West 27th Street, Suite 702
New York, NY 10001
United States of America
Phone +1 212 343 8100 1120
office.us@weverducre.com

WEVER & DUCRÉ

AUSTRIA
showroom.at@weverducre.com
FRANCE
info.fr@weverducre.com
IBERIA
info.es@weverducre.com
ITALY
info.it@weverducre.com
NETHERLANDS
info.nl@weverducre.com



WEVER & DUCRÉ
LIGHTING